

Our Mission

Empowering people with disabilities to achieve our desired level of independence.

Our Vision

A world where people with disabilities have access to the resources and opportunities to live the life of our choosing.



Office Hours:

Walk-Ins: M-Th, 9am-5pm; Fridays by appointment only
pa@lincidaho.org

General number for any office — text or call:
(208) 336-3335

BOISE OFFICE

1878 West Overland Road Phone: (208) 336-3335
Boise, Idaho 83705 Fax: (208) 384-5037

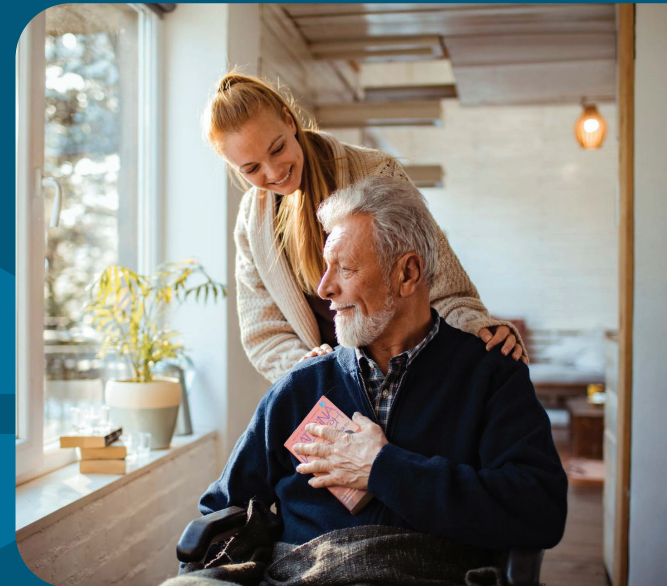
CALDWELL OFFICE

703 South Kimball Avenue Phone: (208) 454-5511
Caldwell, Idaho 83605 Fax: (208) 454-5515

TWIN FALLS OFFICE

1182 Eastland Drive North Phone: (208) 733-1712
Suite C Fax: (208) 733-7711
Twin Falls, Idaho 83301

www.lincidaho.org



Personal Assistance Services

EMPOWERING INDEPENDENCE



What Are Personal Assistance Services (PAS)?

Whether we have a disability or are simply getting older, staying in our own home and in our own community is a priority for all of us. Our quality of life is higher when we are around our family and friends, attending church and other community events, living the life of our choosing. Our Personal Assistance Services (PAS) in-home care program is here to help you do just that.

PAS is the support you need to take care of yourself. This support may include:

- Bathing
- Dressing
- Help using the toilet
- Transferring
- Walking/mobility
- Eating
- Medication reminders
- Housework
- Laundry
- Shopping
- Meal preparation

What Makes LINC Unique?

As a Center for Independent Living, and a 501(c)3 not-for profit, we offer you benefits other in-home care provider agencies cannot or do not. For one, our program is self-directed, which means you are in control of your care. Second, we have an Independent Living program that can provide a number of services, like residential ramps, durable medical equipment, and mobility equipment repair at low or no cost to you.

Who is a Personal Assistant?

A Personal Assistant (PA) is someone who is chosen and hired by you or your Personal Representative to assist with activities you would do yourself if you were able. The PA can be a family member, a friend, or someone who provides support to another consumer.

How Much Are PAs Paid and How Do PAs Apply?

If you need in-home care and you have someone you want to work as your PA, let us know. **If you are looking to work as a PA at LINC, please contact us.** We pay a competitive wage and you may be eligible for Minimal Essential Coverage (MEC) insurance under the Affordable Care Act.

To work as a PA, you must:

- Be 18 years or older
- Successfully pass a background check
- Be authorized to work in the United States
- Attend and complete an orientation through LINC
- Have good communication skills

How Do I Pay for PAS?

Our PAS Team can help you determine how to pay for home and community-based services, including:

- Medicaid
- Molina Healthcare
- Blue Cross of Idaho
- Private Pay
- Area Agency on Aging / Office on Aging

If you have Long-Term Care insurance, contact us to discuss this option.



www.lincidaho.org

pa@lincidaho.org

(208) 336-3335